



# Flowshield Comfort

(2 – 3 mm)

A matt, self-smoothing flexible polyurethane coating ideal for a minimalist, modern and contemporary environment.

Flowshield Comfort is ideal for commercial & industrial environments with intensive traffic such as retail, offices, hospitals, schools.



**Acoustic Resistance:**  
Resilient acoustic, noise reduction and sound dampening.



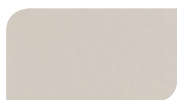
**Soft & Comfortable:**  
Very soft feel underfoot and comfortable floor to walk on.



**UV Resistance:**  
Offers topcoat resistance to UV light.



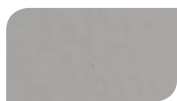
**Eco-Friendly & M1 Certified:**  
Low VOC, emissions and M1 Certified system.



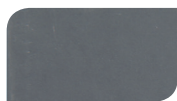
Sealer: Silk Grey (RAL 7044)  
Topping: Yellow Grey 217



Sealer: Signal Grey (RAL 7004)  
Topping: Goosewing Grey 222



Sealer: Dusty Grey (RAL 7037)  
Topping: Mid Grey 280



Sealer: Graphite Grey (RAL 7024)  
Topping: Dark Grey 281

The colours and aggregates shown are examples of the design options that can be obtained with this system. Special colours will be priced on application. For a full colour chart and samples, contact your local Flowcrete office.



## Technical Profile\*

REACTION TO FIRE	
EN 13501-1	B <sub>fl</sub> - s1
IMPACT RESISTANCE	
EN ISO 6272	IR20
TEMPERATURE RESISTANCE	
	Tolerant of sustained temperatures up to 50°C
WEAR RESISTANCE	
EN 13892-5	RWA10
BOND STRENGTH	
EN 13892-8	B2.0
ELONGATION AT BREAK	
DIN 53504	50-100%
SHORE A & D HARDNESS	
EN ISO 7619-1	Shore D - Approx. 40 Shore A - Approx. 80
RELEASE OF CORROSIVE SUBSTANCES	
SR (Synthetic resin screed)	
WATER PERMEABILITY	
	Nil - Karsten test (impermeable)
VOC - ISO 16000-9 & CEN/TS 16516 (EN 16402)	
Emission speed TVOC: <0.110 mg/m <sup>2</sup> h after 28 days	
SLIP RESISTANCE** (in accordance with HSE and UKSRG guidelines)	
EN 13036-4 / BS 7976-2 (typical values for 4-S rubber slider)	Dry 57 low slip potential Wet 15 high slip potential
TOXICITY	
	Inert and harmless when cured
BS 8204-6 / FeRFA	
	Type 5

SPEED OF CURE***	10°C	20°C	30°C
Light traffic	48 hrs	24 hrs	16 hrs
Full traffic	4 days	2 days	2 days
Full chemical cure	14 days	7 days	4 days

\*These figures are typical properties achieved in laboratory tests at 20°C and at 50% Relative Humidity.

\*\*The slipperiness of flooring materials can change significantly due to the installation process, after short periods of use, due to inappropriate maintenance, longer-term wear and/or surface contaminants (wet or dry). Textured systems are recommended to meet slip resistance value requirements for wet conditions and/or surface contaminants (wet or dry). Please contact our Technical Department for further details and specifications.

\*\*\*From the application of the sealer.

For any other information please contact your local Flowcrete Technical Department.

## Model Specification

<b>Product</b>	Flowshield Comfort
<b>Finish</b>	Matt

Preparatory work and application in accordance with manufacturer's instructions.

## Products Included in This System

Standard system:	
<b>Primer</b>	Hydraseal DPM Natural @ 0.3 kg/m <sup>2</sup> (2 coats for porous substrates)
<b>Topping</b>	Flowshield LXP Soft @ 3 kg/m <sup>2</sup> for 2mm or Flowshield LXP Soft @ 4.5 kg/m <sup>2</sup> for 3mm
<b>Sealer</b>	Peran PU Pigmented Matt @ 0.15 kg/m <sup>2</sup> per coat (Certified for M1 Low Emission Class) or Comfort Sealer @ approx. 0.1 kg/m <sup>2</sup> per coat (suitable for single coat applications)

Detailed application instructions and other sealer options are available upon request.

## Substrate Requirements

Concrete or screed substrate should be a minimum of 25 N/mm<sup>2</sup>, free from laitance, dust and other contamination. The substrate should be dry to 75% RH as per BS8204 and free from rising damp and ground water pressure. If no damp proof membrane is present Hydraseal DPM can be incorporated directly beneath the Flowshield Comfort system.

## Installation Service

The installation should be carried out by a Flowcrete approved contractor with a documented quality assurance scheme. Obtain details of our approved contractors by contacting our customer service team or enquiring via [www.flowcrete.co.uk](http://www.flowcrete.co.uk).

## Environmental Considerations

The finished system is assessed as non-hazardous to health and the environment.

The long service life and seamless surface reduce the need for repairs, maintenance and cleaning. Environmental and health considerations are controlled during manufacture and application of the products by Flowcrete staff and fully trained and experienced contractors.

## Notes

No resin system is totally colour fast and may change colour over time (exhibits a yellowing effect). Colour change depends on the UV light and heat levels present and hence the rate of change cannot be predicted. This is more noticeable in very light colours but does not compromise the product's physical or chemical resistance characteristics. We have endeavoured to adopt colours within our standard range which minimise this change. Intensively coloured products (e.g. hair colorants, medical disinfectants etc.) and plasticizer migration (e.g. from rubber tyres) can lead to irreversible discoloration in the surface.

## Aftercare

Clean regularly in conjunction with a neutral detergent (or mild alkaline detergent for stubborn stains). A satin/ matt protective emulsion (e.g. TASKI Jontec Matt) may be applied to the surface of the Flowshield Comfort system if required, as part of the ongoing maintenance programme. In cases where cleaning companies carry out maintenance they should be instructed to use a floor polish with the same gloss factor as Flowseal PU Matt (Ultra).

## Important Notes

Flowcrete products are guaranteed against defective materials and manufacture and are sold subject to our standard 'Terms and Conditions of Sale', copies of which can be obtained on request.

Any suggested practices or installation specifications for the composite floor or wall system (as opposed to individual product performance specifications) included in this communication (or any other) from Flowcrete UK Ltd constitute potential options only and do not constitute nor replace professional advice in such regard. Flowcrete UK Ltd recommends any customer seek independent advice from a qualified consultant prior to reaching any decision on design, installation or otherwise.

System Datasheet written for Flowcrete UK Ltd. Please consult Technical Team in your own country region for specific details.

[2018.06, 03 UK]

Flowcrete UK Ltd

Booth Lane Sandbach Cheshire CW11 3QF United Kingdom

Tel: +44 1270 753 000 Fax: +44 1270 753 333

Email: [uk@flowcrete.com](mailto:uk@flowcrete.com)

[www.flowcrete.co.uk](http://www.flowcrete.co.uk)