

Deckshield ID (2–3 mm)

A flexible and durable polyurethane for use on intermediate car park decks. Ensuring safety underfoot with enhanced traction.



Independently Certified:

Tested & certified to OS8 and EN 1504-2.



Slip Resistant:

Positively textured anti-slip surface minimises slip and skid risks.



Chemical Resistant:

Protects against diesel, fuel, antifreeze, hydraulic fluid, chlorides & battery acid.



Noise Reducing:

Enhanced traction underfoot minimises unpleasant noise from tyre squeal.



Temperature Resistant:

Softens over 70°C and hardens on cooling.



Mid Grey



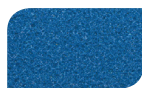
Dark Grey



Forest Green



Traffic Purple



Traffic Blue



Tile Red

The applied colours may differ from the examples shown. For a full colour chart and samples, contact your local Flowcrete office.

Technical Profile

EN 1504-2:2005 Part 2: Surface Protection Systems for Concrete

SLIP RESISTANCE	
UNE-EN 13036-4:2003	Class I: >40 Wet Test
REACTION TO FIRE	
EN 13501-1	B _{fl} -s1
BOND STRENGTH	
Measurement of Bond Strength by Pull-off	
UNE-EN 1542:1999	> 1.5 MPa
WATER VAPOUR TRANSMISSION	
Diffusion-equivalent Air Layer Thickness (Sd)	
UNE-EN ISO 7783:2012	Class II: 5 ≤ Sd ≤ 50 m
LIQUID WATER PERMEABILITY	
UNE-EN 1062-3:2008	<0.1 Kg/m ² × h ^{0.5}
CARBON DIOXIDE PERMEABILITY	
Diffusion-equivalent Air Layer Thickness (Sd)	
UNE-EN ISO 7783:2012	>50 m
ADHESION AFTER THERMAL COMPATIBILITY	
With De-icing Salt Immersion & Thunder Shower Cycling	
UNE-EN 13687-1&2:2002	> 1.5 MPa
ABRASION RESISTANCE	
Taber	
UNE-EN ISO 5470-1:1999	Weight loss <3000 mg
IMPACT RESISTANCE	
UNE-EN ISO 6272-1:2012	Class III: >20 Nm
RESISTANCE TO SEVERE CHEMICAL ATTACK	
UNE-EN 13529:2005 Group 1, 3 & 10	No defects & reduction in Shore Hardness <50%
DETERMINATION OF LINEAR SHRINKAGE	
UNE-EN 12617-1:2004	<0.3%

SPEED OF CURE

	10°C	20°C	30°C
Light Traffic	30 hrs	16 hrs	10 hrs
Full Traffic	36 hrs	24 hrs	16 hrs
Full Chemical Cure	12 days	7 days	5 days

Typical properties achieved in laboratory tests at 20°C and at 50% Relative Humidity for a model specification.

Model Specification

System	Deckshield ID
Finish	Gloss

Preparatory work and application in accordance with manufacturer's instructions.

Products Included In This System

Deckshield ID for normal wear areas

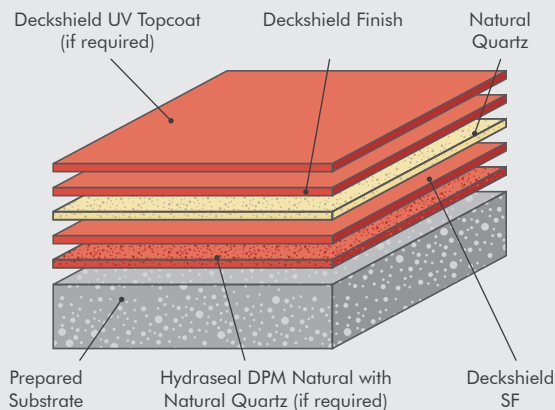
(e.g. parking bays and lighter traffic).

Deckshield ID-HD for heavier wear areas

(e.g. drive aisles, turning points and ramps).

Deckshield ID-Ramp for very heavier wear areas

(e.g. sole entry/exit ramps and turning points).



Substrate Requirements

Concrete or screed substrate should be a minimum of 25 N/mm², free from laitance, dust and other contamination. Substrate should be dry to 75% RH as per BS8203.

NB: Technical proposals are written for each installation to meet the client's particular requirements, the final thickness will be dependant upon the specification.

Installation Service

The installation should be carried out by a Deckshield licensed contractor with a documented quality assurance scheme. Obtain details of our licensed contractors by contacting our customer service team or enquiring via our website www.flowcrete.co.uk

Important Notes

Please contact our Technical Advisors for details of specialist companies to supply line-marking, which can be re-coated throughout the life of the Deckshield system.

No resin system is totally colour fast and may change colour over time (exhibits a yellowing effect). Colour change depends on the UV light and heat levels present and hence the rate of change cannot be predicted. This is more noticeable in very light colours but does not compromise the product's physical or chemical resistance characteristics. We have endeavoured to adopt colours within our standard range which minimise this change.

Aftercare, Cleaning & Maintenance

Clean regularly using a single or double headed rotary scrubber drier in conjunction with a mildly alkaline detergent.

Environmental Considerations

The finished system is assessed as non-hazardous to health and the environment. The long service life and seamless surface reduce the need for repairs, maintenance and cleaning. Environmental and health considerations are controlled during manufacture and application of the products by Flowcrete staff and fully trained application teams.

Flowcrete's products are guaranteed against defective materials and manufacture and are sold subject to its standard Terms and Conditions of Sale, copies of which can be obtained on request. Any suggested practices or installation specifications for the composite floor or wall system (as opposed to individual product performance specifications) included in this communication (or any other) from Flowcrete UK Ltd constitute potential options only and do not constitute nor replace professional advice in such regard. Flowcrete UK Ltd recommends any customer seek independent advice from a qualified consultant prior to reaching any decision on design, installation or otherwise.

System Datasheet written for Flowcrete UK Ltd. Please consult Technical Team in your own country region for specific details. [09/05/19, 01 UK]