

Deckshield ED (3 - 4mm)

A durable polyurethane deck coating system for use on external or exposed car park decks incorporating a flexible membrane.

Deckshield ED provides a colourful crack bridging, waterproof wearing surface for use over exposed new or refurbished car park decks.



UV Resistant:

100% UV stable formulation available to prevent the floor from yellowing.



Slip Resistant:

Positively textured anti-slip surface minimizes slip and skid risks.



Chemical Resistant:

Protects against diesel, fuel, antifreeze, hydraulic fluid, chlorides & battery acid.



Noise Reducing:

Enhanced traction underfoot minimises unpleasant noise from tyre squeal.



Aesthetically Attractive:

Brightens up dull, dark, musty car parks.



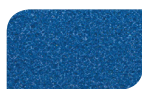
Mid Grey



Dark Grey



Forest Green



Traffic Blue



Tile Red



Traffic Purple

The applied colours may differ from the examples shown.
For a full colour chart, special colours and samples, contact your local Flowcrete office.



Technical Profile*

REACTION TO FIRE	
EN 13501-1	B _{fl} - s1
SLIP/SKID RESISTANCE**	
EN 13036-4	Class III: >55 units Wet (outside)
TEMPERATURE RESISTANCE	
Softens over 70°C, hardens on cooling	
RESISTANCE TO CHLORIDE IONS	
DOT BD47/94: Appendix B, Method B4,2(d)	No chloride ion penetration after 28 days
ABRASION RESISTANCE	
EN ISO 5470-1	Weight loss < 3000 mg using H22 wheel, 1000 cycles, load 1000g
IMPACT RESISTANCE	
EN ISO 6272-1	Class II: ≥ 10 Nm
CAPILLARY ABSORPTION & WATER PERMEABILITY	
EN 1062-3	w < 0.1 kg/m ² x h ^{0.5}
CRACK BRIDGING ABILITY	
EN 1062-7 Method A, Table 6 Method B, Table 7	Class A5 (-20°C) Class 4.2 (-20°C)
ARTIFICIAL WEATHERING	
EN 1062-11:2002	no blistering, no cracking, no flaking after 2000 h of accelerated UV exposure
ADHESION BY PULL-OFF TEST	
EN 1542	≥ 1.5 N/mm ² (with or without trafficking)

SPEED OF CURE	10° C	20° C	30° C
Light Traffic	30 hrs	16 hrs	10 hrs
Full Traffic	36 hrs	24 hrs	16 hrs
Full Chemical Cure	12 days	7 days	5 days

[* The figures that follow are typical properties achieved in laboratory tests at 20°C and at 50% Relative Humidity for a model specification.]

[** The slipperiness of flooring materials can change significantly, due to the installation process, after short periods of use, due to inappropriate maintenance, longer-term wear and/or surface contaminants (wet or dry).]

**Cure times at temperatures between 0–30° C can be achieved by altering the quantity of catalyst used.
For applications falling outside of this temperature range, please contact your local Flowcrete Technical Department.

Model Specification

System	Deckshield ED
Finish	Gloss

Preparatory work and application in accordance with manufacturer's instructions.

Products Included In This System

Deckshield ED for normal wear areas (e.g. parking bays and lighter traffic).
Deckshield ED-HD for heavier wear areas (e.g. drive aisles, turning points and ramps).

Substrate Requirements

Concrete or screed substrate should be a minimum of 25 N/mm², free from laitance, dust and other contamination. Substrate should be dry to 95% RH as per BS8204. The system is designed to cope with construction moisture but is not designed to resist hydrostatic water pressure. In such circumstances external tanking or pressure relief, by e.g. directed drainage, must be provided to the structure.

NB: Technical proposals are written for each installation to meet the client's particular requirements, the final thickness will be dependant upon the specification.

Installation Service

The installation should be carried out by a Deckshield licensed contractor with a documented quality assurance scheme. Obtain details of our licensed contractors by contacting our customer service team or enquiring via our website - www.flowcrete.co.uk.

Important Notes

Please contact our Technical Advisors for details of specialist companies to supply line-marking, which can be re-coated throughout the life of the Deckshield system.

No resin system is totally colour fast and may change colour over time (exhibits a yellowing effect). Colour change depends on the UV light and heat levels present and hence the rate of change cannot be predicted. This is more noticeable in very light colours but does not compromise the product's physical or chemical resistance characteristics. We have endeavoured to adopt colours within our standard range which minimise this change.

Aftercare, Cleaning & Maintenance

Clean regularly using a single or double headed rotary scrubber drier in conjunction with a mildly alkaline detergent.

Environmental Considerations

The finished system is assessed as non-hazardous to health and the environment. The long service life and seamless surface reduce the need for repairs, maintenance and cleaning. Environmental and health considerations are controlled during manufacture and application of the products by Flowcrete staff and fully trained application teams.

Flowcrete products are guaranteed against defective materials and manufacture and are sold subject to our standard 'Terms and Conditions of Sale', copies of which can be obtained on request. Any suggested practices or installation specifications for the composite floor or wall system (as opposed to individual product performance specifications) included in this communication (or any other) from Flowcrete UK Ltd constitute potential options only and do not constitute nor replace professional advice in such regard. Flowcrete UK Ltd recommends any customer seek independent advice from a qualified consultant prior to reaching any decision on design, installation or otherwise.

[2018.01, 01 UK]