

Flowfresh SL (2 mm)



Description

Flowfresh SL is a 2 mm heavy duty, chemical resistant antimicrobial treated polyurethane resin floor finish. Attractive smooth matt coloured floor finish.

Uses

Ideal for dry processing zones such as food packaging zones.

Benefits

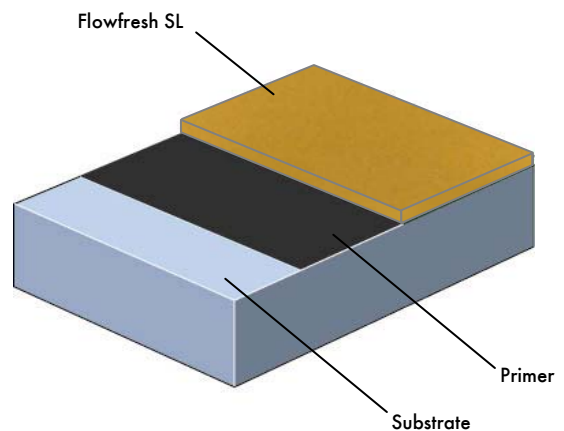
- Contains Polygiene, an antimicrobial additive based on silver ion technology
- Cost effective
- Very high chemical resistance
- Easy to clean and sterilise – minimal joints
- Non-tainting, non-dusting
- High abrasion resistance
- Low odour during application

Project References

Food: Nestlé; Mars; McVities; Courage Brewery; Grants Whisky; also meat, fish and drinks industries.

Pharmaceutical: Astra Zeneca; Pfizer; Levers; GlaxoSmithKline; Bayer and many more.

System Design



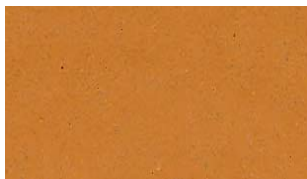
Standard colour chart



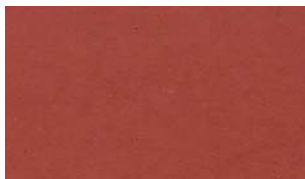
Ochre



Cream



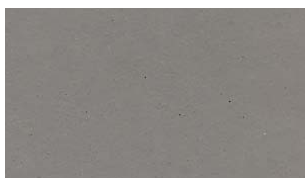
Mustard



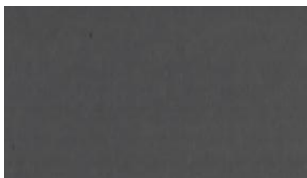
Red



Dark Green



Mid Grey



Dark Grey



Dark Blue

The applied colours may differ slightly from the examples shown above. Contact our customer services for a true colour sample or a special colour match. Special corporate colours and designs can be produced to special order.

Model Specification

Product: Flowfresh SL

Finish: Matt

Thickness: 2 mm

Colour: _____

Preparatory work and application in accordance with suppliers instructions. Supplier: Flowcrete UK Ltd
Telephone: Customer Service - +44 (0) 1270 753000

Substrate Requirements

Concrete or screed substrate should be a minimum of 25N/mm², free from laitance, dust and other contamination. The substrate should be dry to 75% RH as per BS8204 and free from rising damp and ground water pressure. If no damp proof membrane is present Hydraseal DPM can be incorporated directly beneath the Flowfresh SL system.

Products Included in this System

Primer: Flowprime @ 0.25 kg/m²

OR, where a dpm is required,
Hydraseal DPM @ 0.5 kg/m²

Topping: Flowfresh SL (density 1.9 kg/l)
@ 3.8 kg/m² for 2 mm

Note:

Flowfresh SL must always be applied onto a primed surface. Flowfresh SL is a self-sealing finish.

Detailed application instructions are available upon request.

Installation Service

The installation should be carried out by a Flowcrete approved contractor with a documented quality assurance scheme. Obtain details of our approved contractors by contacting our customer service team or enquiring via our web site www.flowcrete.co.uk.

Note

Flowfresh SL is not colour fast and may change colour over time (exhibits a yellowing effect). Colour change depends on the UV light and heat levels present and hence the rate of change cannot be predicted. This is more noticeable in light colours and blues but does not compromise the product's flexibility or chemical resistance characteristics. We have endeavoured to adopt colours within our standard range which minimise this change.

Intensively coloured products (e.g. hair colorants, medical disinfectants etc.) and plasticizer migration (e.g. from rubber tyres) can lead to irreversible discoloration in the surface. Please contact our Technical Services Department for further advice.

Environmental considerations

The finished system is assessed as non-hazardous to health and the environment. The long service life and seamless surface reduce the need for repairs, maintenance and cleaning. Environmental and health considerations are controlled during manufacture and application of the products by Flowcrete staff and fully trained and experienced contractors.

Technical Information

The figures that follow are typical properties achieved in laboratory tests at 20 °C and at 50% Relative Humidity.

Reaction to fire	B _{FL} - s1	EN 13501-1
Wear Resistance	Abrasion quantity <1 cm ³	EN 13892-5
Bond Strength	> 2.5 N/mm ²	EN 13892-8
Impact Resistance	15 Nm	EN ISO 6272
Coefficient of Thermal Expansion	5.70 x 10 ⁻⁶ mm/mm °C	ASTM C531
Compressive Strength	> 50 N/mm ²	EN 13892-2
Flexural Strength	20 N/mm ²	EN 13892-2
Tensile Strength	10 N/mm ²	BS 6319-7
Temperature Resistance	Tolerant to intermittent spillages up to 60 °C or sustained heat from -20 °C to 50 °C	
Water Permeability	Nil - Karsten Test (impermeable)	
Chemical Resistance	Contact Technical Department Excellent resistance to sugars and most acids (organic and inorganic)	
Slip Resistance	Dry >40 low slip potential (in accordance with HSE and UKSRG guidelines)	
Method described in BS 7976-2 (typical values for 4-S rubber slider)		

The slipperiness of flooring materials can change significantly, due to the installation process, after short periods of use, due to inappropriate maintenance, longer-term wear and/ or surface contaminants (wet or dry).

Textured systems are recommended to meet slip resistance value requirements for wet conditions and/ or surface contaminants (wet or dry) - please contact our Technical Advisors for further details and specifications.

Complies with BS 8204-6/FeRFA type 5.

Speed of Cure

	10 °C	20 °C	30 °C
Light traffic	36 hrs	24 hrs	12 hrs
Full traffic	72 hrs	48 hrs	24 hrs
Full chemical cure	10 days	7 days	5 days

Aftercare - Cleaning and Maintenance

Clean regularly using a single or double headed rotary scrubber drier in conjunction with a mildly alkaline detergent.

Microbial / Fungal Resistance

The Polygiene antimicrobial additive incorporated into Flowfresh SL provides control of most bacteria and fungi which come into contact with the floor.

Antimicrobial Active substance: Silver biocide
Tested: ISO 22196/JIS Z2801.

Important Notes

Flowcrete's products are guaranteed against defective materials and manufacture and are sold subject to its standard Terms and Conditions of Sale, copies of which can be obtained on request.

Any suggested practices or installation specifications for the composite floor or wall system (as opposed to individual product performance specifications) included in this communication (or any other) from Flowcrete UK Ltd constitute potential options only and do not constitute nor replace professional advice in such regard. Flowcrete UK Ltd recommends any customer seek independent advice from a qualified consultant prior to reaching any decision on design, installation or otherwise.