

## Flowfresh HF LT (6 - 9mm)

A trowel-applied, heavy duty and slip resistant antimicrobial treated polyurethane resin floor screed ideal for low temperature applications (<15°C).

Flowfresh HF LT offers an attractive fine textured coloured floor finish for wet processing zones subject to high volumes of traffic such as food manufacturing areas.



### Polygiene®:

Contains a silver ion antimicrobial additive that kills up to 99.9% bacteria.



### Chemical Resistance:

Protects against food by-products, fats, hot oils, blood, sugar and acids.



### Slip Resistant:

Positively textured profile to minimise slip risks in wet or damp areas.



### Temperature Resistant:

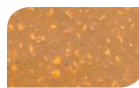
Heat resistant to 120°C and resistant to steam cleaning.



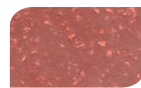
Cream



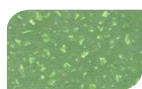
Ochre



Mustard



Red



Dark Green



Dark Blue



Mid Grey



Dark Grey

The applied colours may differ from the examples shown. For a full colour chart and samples, contact your local Flowcrete office. Special corporate colours and designs can be produced to special order.



## Technical Profile\*

FIRE RESISTANCE	
EN 13501-1	B <sub>fl</sub> - s1
WEAR RESISTANCE	
EN 13892-5	< 1 cm <sup>3</sup>
BOND STRENGTH	
EN 13892-8	> 2.5 N/mm <sup>2</sup>
IMPACT RESISTANCE	
EN ISO 6272	20 Nm
TEMPERATURE RESISTANCE	
At 6mm: Liquid discharge and spillages up to 70°C.	At 9mm**: Intermittent spillages up to 120°C & Sustained dry heat from -40°C to 105°C.
COEFFICIENT OF THERMAL EXPANSION	
ASTM C531	3.74 x 10 <sup>-5</sup> mm/mm°C
WATER PERMEABILITY	
Karsten Test	Nil (impermeable)
VAPOUR PERMEABILITY	
ASTM E96:90	3 g/m <sup>2</sup> /24hrs (at 9mm thick)
SLIP RESISTANCE*** (in accordance with HSE and UKSRG guidelines)	
BS 7976-2 (typical values for 4-S rubber slider)	Dry > 40 low slip potential
COMPRESSIVE STRENGTH	
EN 13892-2	> 50 N/mm <sup>2</sup>
FLEXURAL STRENGTH	
EN 13892-2	20 N/mm <sup>2</sup>
TENSILE STRENGTH	
BS 6319-7	10 N/mm <sup>2</sup>
BS 8204-6 / FeRFA	Type 8

SPEED OF CURE	10 °C	20 °C	30 °C
Light Traffic	36 hrs	24 hrs	12 hrs
Full Traffic	72 hrs	48 hrs	24 hrs
Full Chemical Cure	10 days	7 days	5 days

\*These figures are typical properties achieved in laboratory tests at 20°C and at 50% Relative Humidity.

\*\*Assumes a good quality concrete substrate.

\*\*\*The slipperiness of flooring materials can change significantly, due to the installation process, after short periods of use, due to inappropriate maintenance, longer-term wear and/ or surface contaminants (wet or dry). Textured systems are recommended to meet slip resistance value requirements for wet conditions and/ or surface contaminants (wet or dry) - please contact our Technical Advisors for further details and specifications.

## Model Specification

<b>Product</b>	Flowfresh HF LT
<b>Finish</b>	Matt

Preparatory work and application in accordance with manufacturer's instructions.

## Products Included in This System

<b>Primer (if required)</b>	Flowprime @ 0.25 kg/m <sup>2</sup> When a DPM is required: Hydraseal DPM @ 0.5 kg/m <sup>2</sup> When high heat resistance is critical: Flowfresh Primer @ 0.25 kg/m <sup>2</sup>
<b>Scatter</b>	1 - 2mm silica sand @ 0.5 kg/m <sup>2</sup>
<b>Topping</b>	Flowfresh HF LT (density 2.1 kg/l) For general chemical resistance: 12.6 kg/m <sup>2</sup> @ 6 mm For best temperature resistance: 18.9 kg/m <sup>2</sup> @ 9 mm Flowfresh HF Lt is a self-sealing finish.

Detailed application instructions are available upon request.

## Substrate Requirements

Flowfresh products are not suitable for application onto polymer modified self smoothing screed substrates. Concrete or screed substrate should be a minimum of 25N/mm<sup>2</sup>, free from laitance, dust and other contamination. Check the relative humidity at ground level. Substrate humidity must not exceed 75% RH as per BS8204 (otherwise the primer must be substituted by Hydraseal DPM) and be free from rising damp and ground water pressure.

For areas where continual heat resistance (above 50°C) is critical, use Flowfresh Primer. Flowfresh Primer is also suitable for substrates up to 97% RH, please consult the Product datasheet for further details.

The priming process may be omitted when applying Flowfresh HF LT over an Isopol SBR screed, or when the consistency of the concrete base ensures minimal porosity, is free of voids and is surface dry up to 97% RH.

## Installation Service

The installation should be carried out by a Flowcrete approved contractor with a documented quality assurance scheme. Obtain details of our approved contractors by contacting our customer service team or enquiring via our website [www.flowcrete.co.uk](http://www.flowcrete.co.uk).

## Notes

Flowfresh HF LT is not colour fast and may change colour over time (exhibits a yellowing effect). Colour change depends on the UV light and heat levels present and hence the rate of change cannot be predicted. This is more noticeable in light colours and blues but does not compromise the product's flexibility or chemical resistance characteristics. We have endeavoured to adopt colours within our standard range which minimise this change. Intensively coloured products (e.g. hair colourants, medical disinfectants etc.) and plasticizer migration (e.g. from rubber tyres) can lead to irreversible discolouration in the surface. Please contact our Technical Services Department for further advice.

## Microbial / Fungal Resistance

The Polygiene® antimicrobial additive in the floor system provides control of most bacteria and fungi in contact with the floor.

<b>Antimicrobial Active Substance</b>	Silver biocide
<b>Tested</b>	ISO 22196 / JIS Z2801

## Environmental Considerations

The finished system is assessed as non-hazardous to health and the environment. The long service life and seamless surface reduce the need for repairs, maintenance and cleaning. Environmental and health considerations are controlled during manufacture and application of the products by Flowcrete staff and fully trained and experienced contractors.

## Aftercare, Cleaning & Maintenance

Clean regularly using a single or double headed rotary scrubber drier in conjunction with a mildly alkaline detergent.

Flowcrete's products are guaranteed against defective materials and manufacture and are sold subject to its standard Terms and Conditions of Sale, copies of which can be obtained on request. Any suggested practices or installation specifications for the composite floor or wall system (as opposed to individual product performance specifications) included in this communication (or any other) from Flowcrete UK Ltd constitute potential options only and do not constitute nor replace professional advice in such regard. Flowcrete UK Ltd recommends any customer seek independent advice from a qualified consultant prior to reaching any decision on design, installation or otherwise.

System Datasheet written for Flowcrete UK Ltd. Please consult Technical Team in your own country region for specific details.  
[2018.05, 01 UK]

Flowcrete UK Ltd  
Booth Lane Sandbach Cheshire CW11 3QF United Kingdom  
Tel: +44 1270 753 000 Fax: +44 1270 753 333  
Email: [uk@flowcrete.com](mailto:uk@flowcrete.com)

[www.flowcrete.co.uk](http://www.flowcrete.co.uk)