

Deckshield Rapide ED (4 - 5mm)

A fast cure methyl methacrylate deck coating system for use on external or exposed car park decks.

Deckshield Rapide ED provides a colourful crack bridging, waterproof wearing surface for use over exposed new or refurbished car park decks.



Fast Track Installation:

Full traffic and chemical cure within 3 hours.



Aesthetically attractive:

Brightens up dull, dark, musty car parks.



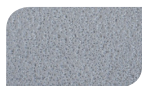
Reduces noise:

Enhanced traction underfoot minimises unpleasant noise from tyre squeal.



Slip resistant:

Positively textured anti-slip surface minimises slip and skid risks.



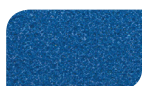
Mid Grey



Dark Grey



Forest Green



Traffic Blue



Tile Red



Traffic Purple

The applied colours may differ from the examples shown.
For a full colour chart, special colours and samples, contact your local Flowcrete office.



Technical Profile*

REACTION TO FIRE	
EN 13501-1	CFL - s1
SLIP/SKID RESISTANCE**	
EN 13036-4	Class III: > 55 units Wet (outside)
RESISTANCE TO CHEMICAL ATTACK	
(BS EN ISO 2812-1)	Resistant to petrol, diesel, antifreeze, hydraulic fluids and battery acids
RESISTANCE TO CHLORIDE IONS	
DOT BD47/94: Appendix B, Method B4,2(d)	No chloride ion penetration after 28 days
ABRASION RESISTANCE	
EN ISO 5470-1	weight loss < 3000 mg using H22 wheel, 1000 cycles, load 1000 g
IMPACT RESISTANCE	
EN ISO 6272-1	Class II: ≥ 10 Nm
CAPILLARY ABSORPTION & PERMEABILITY TO WATER	
EN 1062-3	w < 0.1 kg/m ² x h0.5
CRACK BRIDGING ABILITY	
EN 1062-7 Method A, Table 6	Class A3 (-20°C)
ARTIFICIAL WEATHERING	
EN 1062-11:2002	no blistering, no cracking and no flaking after 2000 h of accelerated UV exposure
ADHESION BY PULL-OFF TEST	
EN 1542	≥ 1.5 N/mm ² (with or without trafficking)

SPEED OF CURE**	
Walk on	1 hour
Full Traffic & Chemical Cure	2-3 hours

[* The figures that follow are typical properties achieved in laboratory tests at 20°C and at 50% Relative Humidity for a standard specification.]

[** The slipperiness of flooring materials can change significantly, due to the installation process, after short periods of use, due to inappropriate maintenance, longer-term wear and/or surface contaminants (wet or dry).]

**Cure times at temperatures between 0-30°C can be achieved by altering the quantity of catalyst used.
For applications falling outside of this temperature range, please contact your local Flowcrete Technical Department.

Model Specification

System	Deckshield Rapide ED
Finish	Satin Matt

Preparatory work and application in accordance with manufacturer's instructions.

Products Included In This System

Deckshield Rapide ED1, ED2 or ED3 For normal wear areas (e.g. parking bays and lighter traffic).
Deckshield Rapide ED1-HD, ED2-HD or ED3-HD For heavier wear areas (e.g. drive aisles, turning points and ramps).
Deckshield Rapide ED-Ramp For very heavy wear areas (e.g. sole entry/exit ramps and turning points).

Substrate Requirements

Concrete or screed substrate should be a minimum of compressive strength of 25 N/mm² (and 1.5 N/mm² tensile strength tested by pull-off adhesion test on site). Substrate should be surface dry to 95% RH as per BS 8204 and free from laitance, dust and other contamination. The system is designed to cope with construction moisture but is not designed to resist hydrostatic water pressure. In such circumstances external tanking or pressure relief, by e.g. directed drainage, must be provided to the structure.

NB: Technical proposals are written for each installation to meet the client's particular requirements, the final thickness will be dependant upon the specification.

Installation Service

The installation should be carried out by a Deckshield licensed contractor with a documented quality assurance scheme. Obtain details of our licensed contractors by contacting our customer service team or enquiring via our website www.flowcrete.co.uk.

Aftercare, Cleaning & Maintenance

Clean regularly using a single or double headed rotary scrubber drier in conjunction with a mildly alkaline detergent.

Environmental Considerations

The finished system is assessed as non-hazardous to health and the environment. The long service life and seamless surface reduce the need for repairs, maintenance and cleaning. Environmental and health considerations are controlled during manufacture and application of the products by Flowcrete staff and fully trained and experienced contractors.

Focus on the Floorzone

Flowcrete are market leaders in specialist industrial and commercial flooring. Systems available include: underfloor heating systems, floor screeds, surface damp proof membranes, decorative floor finishes, seamless terrazzo, car park deck waterproofing, tank lining systems... to name just a few.

Flowcrete products are guaranteed against defective materials and manufacture and are sold subject to our standard 'Terms and Conditions of Sale', copies of which can be obtained on request. Any suggested practices or installation specifications for the composite floor or wall system (as opposed to individual product performance specifications) included in this communication (or any other) from Flowcrete UK Ltd constitute potential options only and do not constitute nor replace professional advice in such regard. Flowcrete UK Ltd recommends any customer seek independent advice from a qualified consultant prior to reaching any decision on design, installation or otherwise.

[2018.05, 01 UK]