

## Flowfresh SR



### Description

Flowfresh SR is a heavy duty, chemical resistant antimicrobial treated polyurethane resin floor screed system. Attractive positively textured coloured floor finish.

### Uses

Ideal for wet processing zones such as food manufacturing, food preparation areas, and chemical processing plants.

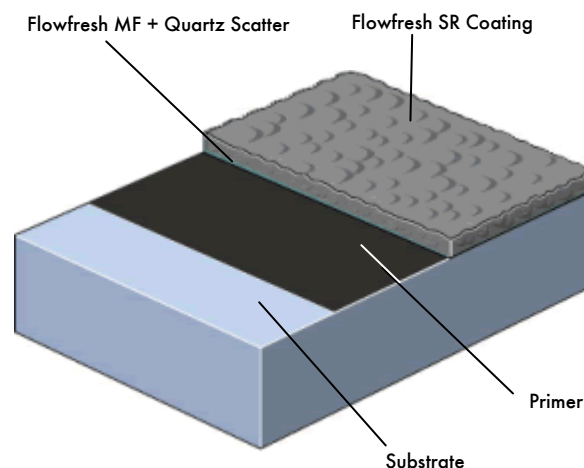
### Benefits

- Contains Polygiene, an antimicrobial additive based on silver ion technology
- Very high chemical resistance
- Easy to clean and sterilise surface, minimal joints
- Heat resistant up to 90°C (intermittent spillages)
- Non-tainting, non-dusting
- High abrasion resistance
- Withstands high mechanical stress
- Good alternative to expensive acid resistant tiles
- Low odour during application
- Positive slip resistance
- Rapid installation

### Project References

B. Food, Saha Farms, CP, Sun Valley, Nestle, Ajinomoto, Malee Sompran, Thai International Airway, Panus Poultry, Region Food Bar S Meats, Lawlers Desserts

### Example System Design



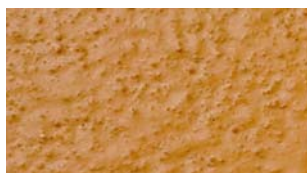
### Standard colour chart



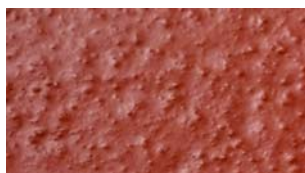
Ochre



Cream



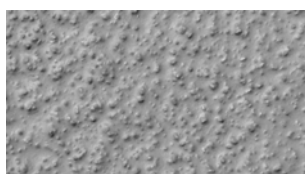
Mustard



Red



Dark Green



Mid Grey



Dark Blue



Dark Grey

The applied colours may differ slightly from the examples shown above. Contact our customer services for a true colour sample or a special colour match. Special corporate colours and designs can be produced to special order.

## Model Specification

Product: Flowfresh SR

Finish: Matt

Thickness: \_\_\_\_\_mm (5 or 6 mm)

Colour: \_\_\_\_\_

Preparatory work and application in accordance with suppliers instructions. Supplier: Flowcrete UK Ltd

Telephone : Customer Service - +44 (0)1270 753000

## Substrate Requirements

Concrete or screed substrate should be a minimum of 25N/mm<sup>2</sup>, free from laitance, dust and other contamination. The substrate should be dry to 75% RH as per BS 8204 and free from rising damp and ground water pressure. If no damp proof membrane is present, Hydraseal DPM can be incorporated directly beneath the Flowfresh SR system.

## Products Included in this System

**Primer:** Flowprime @ 0.25 kg/m<sup>2</sup>

**OR**, where a dpm is required,

Hydraseal DPM @ 0.5 kg/m<sup>2</sup>

**OR**, where high heat resistance is critical,

Flowfresh Primer @ 0.25 kg/m<sup>2</sup>

### For 4 mm system

Topping: Flowfresh SL (2 mm) @ 3.8 kg/m<sup>2</sup>

Scatter: Natural Quartz 0.3-0.8mm @ 3.5 kg/m<sup>2</sup>

Sealer: Flowfresh SR Coating @ 0.5 kg/m<sup>2</sup>

### For 6 mm system

Topping: Flowfresh MF (4 mm) @ 7.6 kg/m<sup>2</sup>

Scatter: Natural Quartz 0.3-0.8 mm @ 5kg/m<sup>2</sup>

Sealer: Flowfresh SR Coating @ 0.5kg/m<sup>2</sup>

### For 8 mm system

Topping: Flowfresh RT (6 mm) @ 12.6 kg/m<sup>2</sup>

Scatter: Natural Quartz 0.3-0.8mm @ 2.5kg/m<sup>2</sup>

Sealer: Flowfresh SR Coating @ 0.5kg/m<sup>2</sup>

Detailed application instructions are available upon request.

### Note:

Flowfresh SL and MF must always be applied onto a primed surface. Flowprime is suitable for general use, but Flowfresh Primer should be used if the area is exposed to heat (above 50°C) or hot liquids (above 60°C).

## Installation Service

The installation should be carried out by a Flowcrete approved contractor with a documented quality assurance scheme.

Obtain details of our approved contractors by contacting our customer service team or enquiring via our web site [www.flowcrete.co.uk](http://www.flowcrete.co.uk).

### Note

No resin system is totally colour fast and may change colour over time (exhibits a yellowing effect). Colour change depends on the UV light and heat levels present and hence the rate of change cannot be predicted. This is more noticeable in very light colours but does not compromise the product's physical or chemical resistance characteristics. We have endeavoured to adopt colours within our standard range which minimise this change.

Intensively coloured products (e.g. hair colorants, medical disinfectants etc.) and plasticizer migration (e.g. from rubber tyres) can lead to irreversible discoloration in the surface. Please contact our Technical Services Department for further advice.

## Technical Information

The figures that follow are typical properties achieved in laboratory tests at 20°C and at 50% Relative Humidity.

Reaction to fire	BFL - s1	EN 13501-1
Wear Resistance	Abrasion quantity <1 cm <sup>3</sup>	EN 13892-5
Bond Strength	> 2.5 N/mm <sup>2</sup>	EN 13892-8
Impact Resistance	15 Nm	EN ISO 6272
Compressive Strength	> 50 N/mm <sup>2</sup>	EN 13892-2
Flexural Strength	20 N/mm <sup>2</sup>	EN 13892-2
Tensile Strength	7 N/mm <sup>2</sup>	BS 6319-7
Temperature Resistance (@8 mm)	Tolerant to intermittent spillages up to 90°C or sustained heat from -20°C to 50°C	
Water Permeability	Nil - Karsten Test (impermeable)	
Vapour Permeability	ASTM E96:90 3 g / m <sup>2</sup> / 24hrs (at 8 mm thick)	
Chemical Resistance	Contact Technical Department Excellent resistance to sugars and most acids (organic and inorganic)	
Slip Resistance	Dry >40 low slip potential	
Method described in BS 7976-2 (typical values for 4-S rubber slider)	(in accordance with HSE and UKSRG guidelines)	

The slipperiness of flooring materials can change significantly, due to the installation process, after short periods of use, due to inappropriate maintenance, longer-term wear and/ or surface contaminants (wet or dry).

Textured systems are recommended to meet slip resistance value requirements for wet conditions and/ or surface contaminants (wet or dry) - please contact our Technical Advisors for further details and specifications.

Complies with BS 8204-6/FeRFA type 6 (4mm), type 8 (6 mm + 8 mm)

## Speed of Cure

	10°C	20°C	30°C
Light traffic	36 hrs	24 hrs	12 hrs
Full traffic	72 hrs	48 hrs	24 hrs
Full chemical cure	10 days	7 days	5 days

## Aftercare - Cleaning and Maintenance

Clean regularly using a single or double headed rotary scrubber drier in conjunction with a mildly alkaline detergent.

## Microbial / Fungal Resistance

The Polygiene antimicrobial additive incorporated into Flowfresh SR provides control of most bacteria and fungi which come into contact with the floor.

Antimicrobial Active substance: Silver biocide

Tested: ISO 22196/JIS Z2801.

## Important Notes

Flowcrete's products are guaranteed against defective materials and manufacture and are sold subject to its standard Terms and Conditions of Sale, copies of which can be obtained on request.

Any suggested practices or installation specifications for the composite floor or wall system (as opposed to individual product performance specifications) included in this communication (or any other) from Flowcrete UK Ltd constitute potential options only and do not constitute nor replace professional advice in such regard. Flowcrete UK Ltd recommends any customer seek independent advice from a qualified consultant prior to reaching any decision on design, installation or otherwise.