

## Flowshield CHD (1.5 – 2.5 mm)



### Description

A self-smoothing flexible and aromatic polyurethane coating with a coloured aliphatic topcoat for a smooth surface finish. Tolerant of sustained temperatures up to 50°C.

### Uses

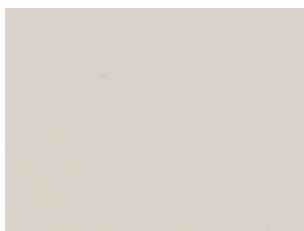
Ideal for commercial environments with intensive traffic such as offices, shops, department stores, supermarkets, restaurants, hospitals and schools.

To achieve the best aesthetics, the system must be laid in a clean environment free from dust, hairs, fluff etc.

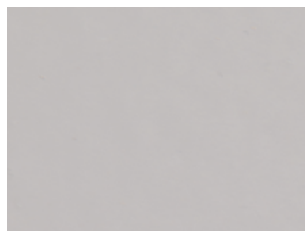
### Benefits

- Attractive and colourful floor finish.
- Resistance to UV light.
- Enhanced hard wearing.
- Self smoothing.
- Cost effective solution.
- High chemical resistance.
- Solvent free; low odour.
- Resilient and sound dampening.
- Low VOC content (M1 certified).

### Standard colour chart



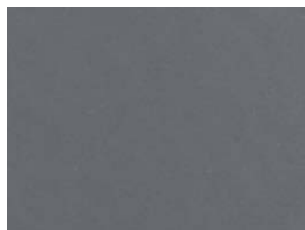
Silk Grey (near to RAL 7044)



Signal Grey (near to RAL 7004)



Dusty Grey (near to RAL 7037)

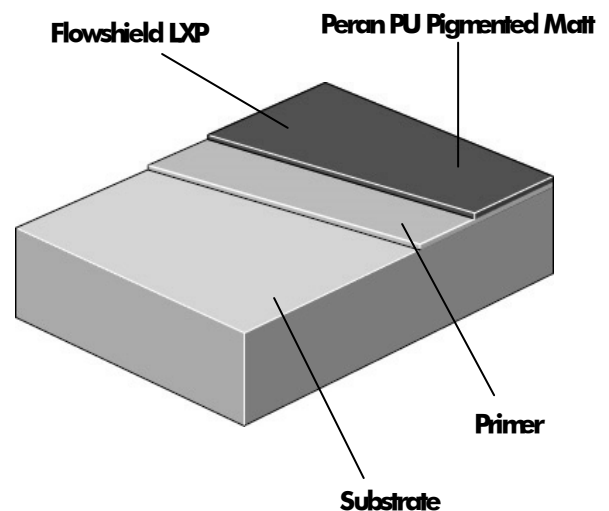


Graphite Grey (near to RAL 7024)

The applied colours may differ slightly from the examples shown above. Contact our customer services for a true colour sample or a special colour match. Other colours are available to special order in minimum quantities of 300 kg.

Note: Special colours will be priced on application.

### System Design



## Model Specification

Product: Flowshield CHD

Finish: Matt

Thickness: \_\_\_\_\_ (1.5 or 2.5 mm)

Colour: \_\_\_\_\_

Preparatory work and application in accordance with suppliers

instructions. Supplier: Flowcrete UK Ltd

Telephone: Customer Service +44 (0) 1270 753000

### Substrate Requirements

Concrete or screed substrate should be a minimum of 25N/mm<sup>2</sup>, free from laitance, dust and other contamination. The substrate should be dry to 75% RH as per BS8204 and free from rising damp and ground water pressure. If no damp proof membrane is present Hydrased DPM can be incorporated directly beneath the Flowshield CHD system

### Products Included in this System

#### Standard system

Primer: Hydrased DPM Natural @0.3 kg/m<sup>2</sup>  
(Porous substrates may require 2 coats)

Topping: Flowshield LXP @2.3 kg/m<sup>2</sup> (for 1.5 mm)  
or  
Flowshield LXP @3.8 kg/m<sup>2</sup> (for 2.5 mm)

Sealer: Peran PU Pigmented Matt @0.3 kg/m<sup>2</sup>  
(total for 2 coats)

Detailed application instructions are available upon request.

### Installation Service

The installation should be carried out by a Flowcrete approved contractor with a documented quality assurance scheme. Obtain details of our approved contractors by contacting our customer service team or enquiring via our web site [www.flowcrete.co.uk](http://www.flowcrete.co.uk).

### Note

No resin system is totally colour fast and may change colour over time (exhibits a yellowing effect). Colour change depends on the UV light and heat levels present and hence the rate of change cannot be predicted. This is more noticeable in very light colours but does not compromise the product's physical or chemical resistance characteristics. We have endeavoured to adopt colours within our standard range which minimise this change.

Intensively coloured products (e.g. hair colorants, medical disinfectants etc.) and plasticizer migration (e.g. from rubber tyres) can lead to irreversible discoloration in the surface. Please contact our Technical Services Department for further advice.

### Environmental considerations

The finished system is assessed as non-hazardous to health and the environment. The long service life and seamless surface reduce the need for repairs, maintenance and cleaning. Environmental and health considerations are controlled during manufacture and application of the products by Flowcrete staff and fully trained and experienced contractors.

## Technical Information

The figures that follow are typical properties achieved in laboratory tests at 20° C and at 50% Relative Humidity.

Reaction to fire	B <sub>FL</sub> -s1	EN 13501-1
Impact Resistance	IR20	EN ISO 6272
Wear Resistance	RWA10	EN 13892-5
Bond Strength	B2.0	EN 13892-8
Release of corrosive substances		SR (Synthetic resin screed)
Shore D Hardness	Approx. 65	EN ISO 7619-1
Shore A Hardness	n/a	EN ISO 7619-1
Temperature Resistance		Tolerant of sustained temperatures up to 50° C.
Water Permeability		Nil -Karsten test (impermeable)
VOC		ISO 16000-9 & CEN/TS 16516 (EN 16402) Emission speed TVOC: <0.010 mg/m <sup>3</sup> h after 28 days
Chemical Resistance		Contact Technical Department
Toxicity		Inert and harmless when cured
Slip Resistance		Dry 57 low slip potential (in accordance with HSE and UKSRG guidelines) Wet 15 high slip potential (in accordance with HSE and UKSRG guidelines)

The slipperiness of flooring materials can change significantly, due to the installation process, after short periods of use, due to inappropriate maintenance, longer term wear and/ or surface contaminants (wet or dry).

Textured systems are recommended to meet slip resistance value requirements for wet conditions and/ or surface contaminants (wet or dry) -please contact our Technical Advisors for further details and specifications.

Complies with BS 8204-6/FerFA category 5.

Speed of Cure (from the application of the Sealer)  
(50% Relative Humidity)

	10° C	20° C	30° C
Light traffic	48 hours	24 hours	16 hours
Full traffic	4 days	2 days	2 days
Full chemical cure	14 days	7 days	4 days

### Aftercare - Cleaning and Maintenance

Clean regularly in conjunction with a neutral detergent (or mild alkaline detergent for stubborn stains). A satin/ matt protective emulsion (e.g. TASKI Jontec Matt) may be applied to the surface of the Flowshield CHD system if required, as part of the ongoing maintenance programme. Refer to separate product data sheets for details. In cases where cleaning companies carry out maintenance they should be instructed to use a floor polish with the same gloss factor as Flowseal PU Matt (Ultra).

Please contact our Technical Advisors for further details and cleaning documents.

### Important Notes

Flowcrete's products are guaranteed against defective materials and manufacture and are sold subject to its standard Terms and Conditions of Sale, copies of which can be obtained on request.

Any suggested practices or installation specifications for the composite floor or wall system (as opposed to individual product performance specifications) included in this communication (or any other) from Flowcrete UK Ltd constitute potential options only and do not constitute nor replace professional advice in such regard. Flowcrete UK Ltd recommends any customer seek independent advice from a qualified consultant prior to reaching any decision on design, installation or otherwise.

Model Specification written for Flowcrete UK Ltd.

Please consult Technical Team in own country region for specific details.

[www.flowcrete.co.uk](http://www.flowcrete.co.uk)

Flowcrete UK Ltd

The Flooring Technology Centre Booth Lane

Sandbach Cheshire CW11 3QF UK

Tel: +44 (0) 1270 753000 Fax: +44 (0) 1270 753333

Email: [uk@flowcrete.com](mailto:uk@flowcrete.com)

Flowcrete UK Ltd is an RPM company