

## Flowshield *fx* (2 - 3 mm)



Architect: DZAP  
Photographer: Stijn Poelstra

### Description

A solvent-free, self-smoothing, epoxy resin, combined with decorative coloured particles; available in a matt finish.

### Uses

Ideal for areas with intensive traffic such as offices, shops, department stores, supermarkets, restaurants, hospitals and schools.

To achieve the best aesthetics, the system must be laid in a clean environment (e.g. free from dust, hairs, fluff etc.).

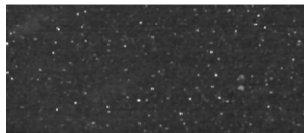
### Benefits

- Attractive and colourful floor finish.
- Enhanced resistance to UV light.
- Self smoothing.
- Hard wearing.
- High chemical resistance.
- Solvent free; low odour.
- Does not require waxing like rubber, linoleum or PVC.

### Standard colour chart



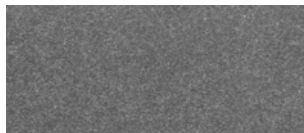
White SF57 (uses SF41 White 050)



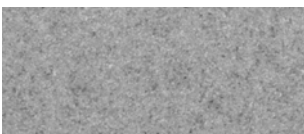
Black SF56 (uses SF41 Dark Grey 281)



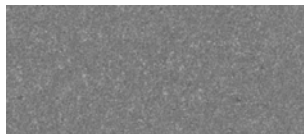
Pigeon Blue SF38 (uses SF41 Light Grey 232)



Quartz Grey SF36 (uses SF41 Mid Grey 280)



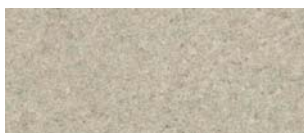
Signal Grey SF35 (uses SF41 Light Grey 232)



Dusty Grey SF34 (uses SF41 Light Grey 232)



Moss Grey SF31 (uses SF41 Light Grey 232)

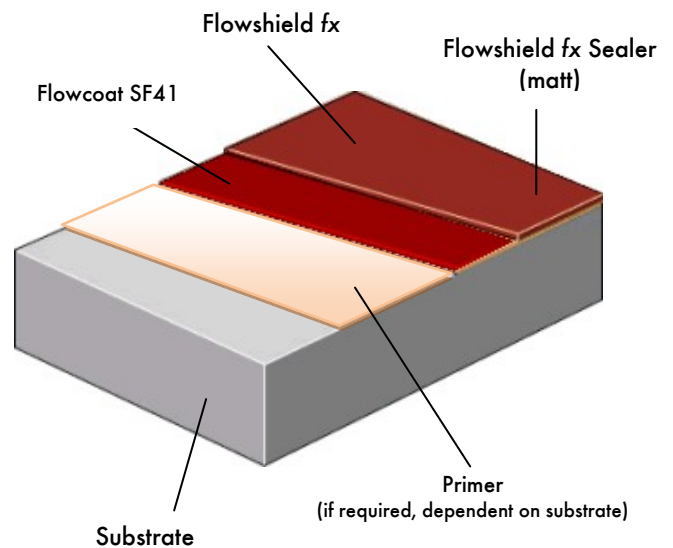


Grey Beige SF26 (uses SF41 Light Grey 232)

The applied colours may differ slightly from the examples shown above.  
Contact our customer services for a true colour sample or a special colour match.

Special corporate colours and designs can be produced to special order.  
Note that some light or bright colours may need multiple coats to achieve opacity.

### System Design



## Model Specification

Product: Flowsheild fx

Finish: Matt

Thickness: \_\_\_\_\_ (2 to 3 mm)

Colour: \_\_\_\_\_

Preparatory work and application in accordance with suppliers instructions. Supplier: Flowcrete UK Ltd  
Telephone: Customer Service +44 (0) 1270 753000

## Substrate Requirements

Concrete or screed substrate should be a minimum of 25N/mm<sup>2</sup>, free from laitance, dust and other contamination. The substrate should be dry to 75% RH as per BS8204 and free from rising damp and ground water pressure. If no damp proof membrane is present Hydraseal DPM can be incorporated directly beneath the Flowshield fx system.

## Products Included in this System

Coating: Flowcoat SF41 @ 0.3 – 0.5 kg/m<sup>2</sup>

Topping: Flowshield fx @ 2.8 kg/m<sup>2</sup> (2 mm)

Seal: Flowshield fx Sealer @ 0.15 - 0.175 kg/m<sup>2</sup>  
(Matt)

For porous substrates, first prime with:  
Peran STC @ 0.2 – 0.3 kg/m<sup>2</sup>

For dense substrates, first prime with:  
Flowseal EPW (20% dilution) @ 0.15 kg/m<sup>2</sup>

Detailed application instructions are available upon request.

## Installation Service

The installation should be carried out by a Flowcrete approved contractor with a documented quality assurance scheme. Obtain details of our approved contractors by contacting our customer service team or enquiring via our web site [www.flowcrete.co.uk](http://www.flowcrete.co.uk).

## Note

No resin system is totally colour fast and may change colour over time (exhibits a yellowing effect). Colour change depends on the UV light and heat levels present and hence the rate of change cannot be predicted. This is more noticeable in very light colours but does not compromise the product's physical or chemical resistance characteristics. We have endeavoured to adopt colours within our standard range which minimise this change.

Intensively coloured products (e.g. hair colorants, medical disinfectants etc.) and plasticizer migration (e.g. from rubber tyres) can lead to irreversible discoloration in the surface. Please contact our Technical Services Department for further advice.

## Environmental considerations

The finished system is assessed as non-hazardous to health and the environment. The long service life and seamless surface reduce the need for repairs, maintenance and cleaning. Environmental and health considerations are controlled during manufacture and application of the products by Flowcrete staff and fully trained and experienced contractors.

## Technical Information

The figures that follow are typical properties achieved in laboratory tests at 20 °C and at 50% Relative Humidity.

Reaction to fire	B <sub>FL</sub> - s1	EN 13501-1
Wear Resistance	< 3000 mg	EN ISO 5470-1
Release of corrosive substances		SR (Synthetic resin screed)
Shore D Hardness	Approx. 90	DIN 53505
Temperature Resistance	Tolerant of sustained temperatures up to 50 °C.	
Water Permeability	Impermeable (liquid tight)	
Chemical Resistance	Contact Technical Department	
Toxicity	Inert and harmless when cured	
Slip Resistance	Dry >40 low slip potential	
Method described in BS 7976-2 (typical values for 4-S rubber slider)	(in accordance with HSE and UKSRG guidelines)	

The slipperiness of flooring materials can change significantly, due to the installation process, after short periods of use, due to inappropriate maintenance, longer-term wear and/ or surface contaminants (wet or dry).

Textured systems are recommended to meet slip resistance value requirements for wet conditions and/ or surface contaminants (wet or dry) - please contact our Technical Advisors for further details and specifications.

Complies with BS 8204-6/FeRFA category 5.

## Speed of Cure (from the application of the Sealer)

	20 °C, 50% RH
Light traffic	24 hrs
Full traffic	2 - 3 days
Full chemical cure	7 days

## Aftercare - Cleaning and Maintenance

Clean regularly in conjunction with a neutral detergent /floor maintainer and dry burnish. If required, maintain the surface appearance with a suitable satin matt high solids metalized floor polish as required (dependant on levels of traffic). Please contact our Technical Advisors for further details and cleaning documents.

## Important Notes

Flowcrete's products are guaranteed against defective materials and manufacture and are sold subject to its standard Terms and Conditions of Sale, copies of which can be obtained on request.

Any suggested practices or installation specifications for the composite floor or wall system (as opposed to individual product performance specifications) included in this communication (or any other) from Flowcrete UK Ltd constitute potential options only and do not constitute nor replace professional advice in such regard. Flowcrete UK Ltd recommends any customer seek independent advice from a qualified consultant prior to reaching any decision on design, installation or otherwise.