

Deckshield ED systems Exposed Deck (3 - 4 mm)



Description

Deckshield ED is a solvent free polyurethane flexible car park deck coating system which provides a colourful crack bridging, waterproof wearing surface for use over exposed decks of multi-storey car parks.

Uses

To cosmetically enhance, reduce noise and waterproof multi-storey car parks world wide. Deckshield makes multi-storey car parks lighter, safer environments to visit. Deckshield is suitable for refurbishment of existing car parks and on new construction projects.

Benefits

- Aesthetically attractive – brightens up dull, dark, musty car parks
- Reduces noise – stops tyre squeal
- Hard wearing – abrasion resistant
- Solvent free
- Can be used over existing asphalt substrates
- Fire resistant
- Slip resistant
- Resistant to cracking – flexible waterproof membrane
- Excellent bond strength
- Fast track Installation

Project References-

Multi-storey car parks world wide: Kuala Lumpur International Airport; Istanbul Airport; Tsing Yi Car Park, Hong Kong; NCP; Tesco; Marks and Spencer and local authority car parks throughout the UK.

Standard colour chart



Mid Grey



Forest Green



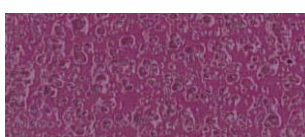
Dark Grey



Tile Red



Traffic Blue



Traffic Purple

The applied colours may differ slightly from the examples shown above. Contact our customer services for a true colour sample or a special colour match. Special corporate colours and designs can be produced to special order.

Model Specification

Product: Deckshield ED system.

Finish: Gloss

Thickness: 3 - 4 mm

Colour: _____

Preparatory work and application in accordance with manufacturer's instructions.

Manufacturer: Flowcrete UK Ltd

Telephone: Customer Service - +44 (0)1270 753000

Substrate Requirements

Concrete or screed substrate should be a minimum of 25 N/mm², free from laitance, dust and other contamination. Substrate should be dry to 95% RH as per BS8204. The system is designed to cope with construction moisture but is not designed to resist hydrostatic water pressure. In such circumstances external tanking or pressure relief, by e.g. directed drainage, must be provided to the structure.

NB: Technical proposals are written for each installation to meet the client's particular requirements, the final thickness will be dependant upon the specification.

Typical system proposals include:-

Deckshield ED for normal wear areas (e.g. parking bays and lighter traffic).

Deckshield ED+HD for heavier wear areas (e.g. drive aisles, turning points and ramps).

Installation Service

The installation should be carried out by a Deckshield licensed contractor with a documented quality assurance scheme.

Obtain details of our licensed contractors by contacting our customer service team or enquiring via our web site www.flowcrete.co.uk

Notes

Please contact our Technical Advisors for details of specialist companies to supply line-marking, which can be re-coated throughout the life of the Deckshield system.

No resin system is totally colour fast and may change colour over time (exhibits a yellowing effect). Colour change depends on the UV light and heat levels present and hence the rate of change cannot be predicted. This is more noticeable in very light colours but does not compromise the product's physical or chemical resistance characteristics. We have endeavoured to adopt colours within our standard range which minimise this change.

Focus on the Floorzone

Flowcrete are market leaders in specialist industrial and commercial flooring. Systems available include: underfloor heating systems, floor screeds, surface damp proof membranes, decorative floor finishes, seamless terrazzo, car park deck waterproofing, tank lining systems... to name just a few. Our objective is to satisfy your Floorzone needs.

Technical Information

The figures that follow are typical properties achieved in laboratory tests at 20° C and at 50% Relative Humidity for a model specification.

Reaction to fire	B _{FL} -s1	EN 13501-1
Slip/skid resistance	Class III: >55 units	EN 13036-4
	Wet (outside)	

The slipperiness of flooring materials can change significantly, due to the installation process, after short periods of use, due to inappropriate maintenance, longer-term wear and/ or surface contaminants (wet or dry).

Temperature Resistance	Softens over 70° C, hardens on cooling	
Resistance to chemical attack (BS EN ISO 2812-1)	Resistant to petrol, diesel, antifreeze, hydraulic fluids and battery acids	
Resistance to chloride ions DOT BD47/94:	No chloride ion penetration after 28 days	
Appendix B, Method B4,2(d)		
Abrasion Resistance	weight loss <3000 mg	EN ISO 5470-1
	using H22 wheel, 1000 cycles, load 1000 g	
Impact Resistance	Class II:	≥10 N EN ISO 6272-1
Capillary absorption & permeability to water	w <0.1 kg/m ² x h ^{0.5}	EN 1062-3
Crack bridging ability	Class A5 (-20° C)	EN 1062-7
		Method A, Table 6
Crack bridging ability	Class 4.2 (-20° C)	EN 1062-7
		Method B, Table 7
Artificial weathering (EN 1062-11:2002)	no blistering, no cracking and no flaking after 2000 h of accelerated UV exposure	
Adhesion by pull-off test	≥1.5 N/mm ²	EN 1542
	(with or without trafficking)	

Speed of Cure

	10° C	20° C	30° C
Light traffic	30 hrs	16 hrs	10 hrs
Full traffic	36 hrs	24 hrs	16 hrs
Full chemical cure	12 days	7 days	5 days

Aftercare Cleaning and Maintenance

Clean regularly using a single or double headed rotary scrubber drier in conjunction with a mildly alkaline detergent.

Environmental considerations

The finished system is assessed as non-hazardous to health and the environment. The long service life and seamless surface reduce the need for repairs, maintenance and cleaning. Environmental and health considerations are controlled during manufacture and application of the products by Flowcrete staff and fully trained and experienced contractors.

Important Notes

Flowcrete's products are guaranteed against defective materials and manufacture and are sold subject to its standard Terms and Conditions of Sale, copies of which can be obtained on request.

Any suggested practices or installation specifications for the composite floor or wall system (as opposed to individual product performance specifications) included in this communication (or any other) from Flowcrete UK Ltd constitute potential options only and do not constitute nor replace professional advice in such regard. Flowcrete UK Ltd recommends any customer seek independent advice from a qualified consultant prior to reaching any decision on design, installation or otherwise.